

Type 61242 Membrane pressure regulator with preset temperature



Characteristics

Range: 4 kPa to 40 kPa
 Contact load: ~ 250V/10A, cos 1
 ~ 250V/2A, cos φ 0.6-0.3
 = 250V/0,1A
 = 48V/0,2A

Protection class: IP 65

Compact design

Connection by means of terminals on the switch.

Description - use

The main use is for regulating and signalling pressure of gases and liquids. Regulated medium must not have aggressive effects on the regulator parts it is in contact with, and must not contain contamination preventing correct function. It is supplied with stainless sensor (steel ČSN 417246) and membrane from fluorocarbon rubber.

Regulators are designed e.g. for steam, liquid fuels, oils, some acids and alkali. Medium temperature max. 200°C

They are supplied to values as per the below specified table.

Accessories for ordering include the connection screws M20 x1,5 see. "Accessories".

Technical data

Ambient temperature: temperature range -20 to +60°C
 temperature range $-20 \leq T_a \leq +40^\circ\text{C}$
 (Ex)

Specification environment Ex:  II 2G Ex de IIB+H₂ T6

 II 2D Ex tD A IP 65 T 50°C

Vibration during operation:

$f = 10$ to 55 Hz, $s_a =$ to 0,15 mm

Min. service life: at load by rated values according to the manual and max. speed of cycling up to 6 cycles/min is min. 100 000 cycles

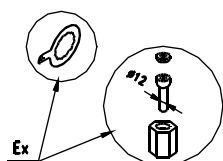
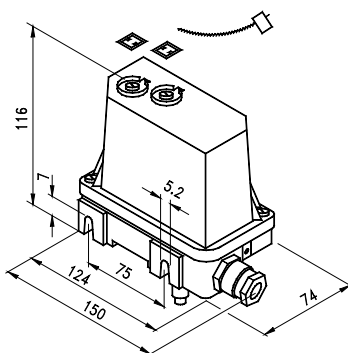
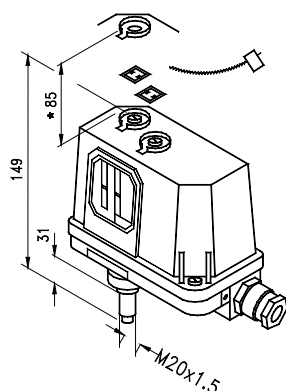
Connection: cable: $\varnothing 9 \div 13$ mm,
 wires: 0,75 at 2,5 mm²

0 kPa = atmospheric pressure
 0,1 MPa = 100 kPa = 1 bar

Order No. 405 xxxxx xxxx			Range *)	Min. difference	Max. difference	Operating pressure [p _{max} /p _{min}]	Hydraulic test pressure	Units	Weight [kg]
Design	Microswitch B	Microswitch							
		B							
T Ex	61242	6111 9111	4 to 40	6	40	3200/-60	4800 - B	kPa	0,65

*) Unless ordered otherwise, the regulator is adjusted to the lower pressure value 15 kPa. The upper pressure value is max. by 6 kPa higher.

Dimension drawing

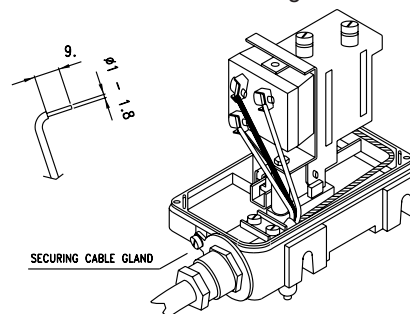


Accessories Ex

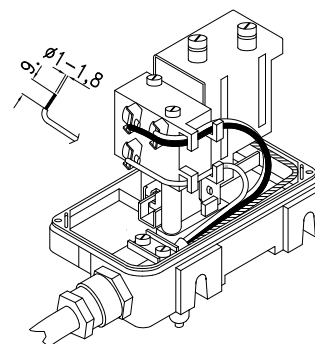
- supplied in design Ex together with regulator
- in design T it is necessary to order separately (see. Accessories)

*) Height above regulator necessary for removing cover is approx 85 mm.

Switch connection in design Ex



Switch connection in design T

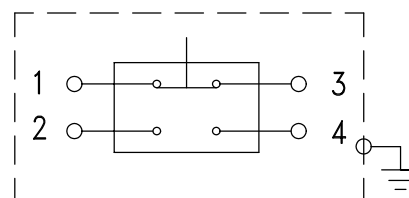


Ordering devices

Code	Name				
405 61242	Membrane pressure regulator with preset temperature				
	Code	Design			
	6	T			
	9	Ex			
		Code	Switch type		
		1	B		
			Code	Range	
			1	4 to 40 kPa	
				Code	Type of rubber
				1	fluorcarbon
405 61242	6	1	1	1	Ordered No.

Order example: pressure membrane regulator, design T, switch B, range 4 to 40kPa, fluorcarbon rubber

Switch connection



Switches 2-4 at increasing pressure.
Switches 1-3 at decreasing

Warranty

24 months warranty is provided from the delivery date unless specified otherwise in the purchase