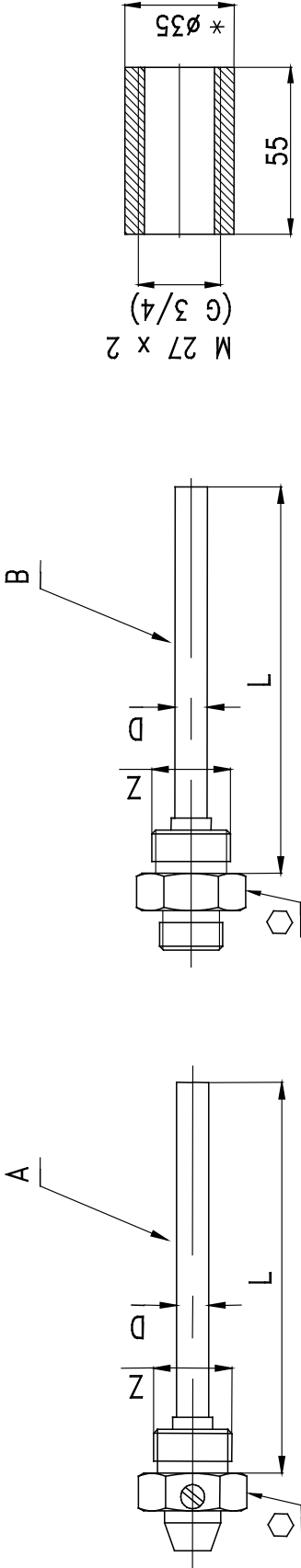


Accessories



Protective wells fig. B for devices type 61134 and 61135 supplied with devices.
 Protective wells fig. A, rubber bushing for devices type 61126, 61127 and welded-on pieces for wells are supplied on special order.

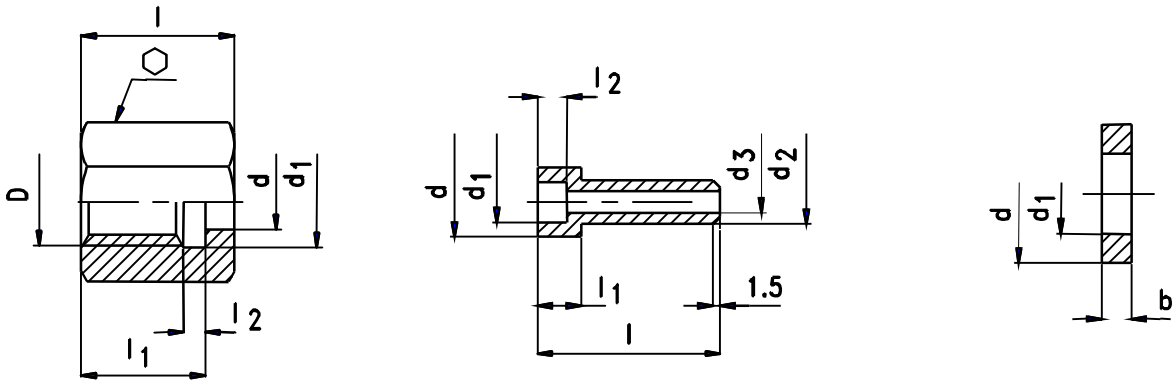
For type	Range [°C]	Fig.	Design – brass, ext. overpressure up to 1MPa 1 MPa = 10 bar				Design – stainless, ext. overpressure up to 3 MPa 1 MPa = 10 bar				OK (*)	Order No. welded-on piece	Order No. Rubber bushing (max. 180 °C)	
			Order No.	Thread Z ₁	Length	Diameter *)	Weight	Order No.	Thread Z ₂	Length				Diameter *)
61216 61127	-40...0	A	405961014116	M 27x2	135	12	0,17	405961014216	M 27x2	135	12	32	M 27x2 405061221316 G 3/4 405061221216	405061014516
	-25...15		405961014716	G 3/4				405961014616	G 1/2					
	30...90		405961015416	M 27x2	175	16	0,2	405961015516	M 27x2	175	14	32		
	70...140		405961015616	G 3/4				405961015916	G 1/2					
	110...180		0...40	B	405961017216	M 27x2	135	12	0,18	405961017316	M 27x2	135		
140...210	405961017416	G 3/4			405961017716	G 1/2				405961017516	G 3/4			
61134 61135	0...40	B	405961018116	M 27x2	160	16	0,21	405961018216	M 27x2	160	32	32	32	
			405961018316	G 3/4				405961018616	G 1/2					405961018416

Ordering example:

2 pcs brass protective wells M27x2 Order No. 405 961 014 116

*) Change of indicated dimensions reserved

Accessories



Regulator accessories in design Ex supplied with devices!
 Accessories in design T is supplied on special order.

For type	Order No.	Weight [kg]	Accessories consists of the:	Material						
61214 61216 61215 61219 61220	405 961 177 916 405 961 177 926 (nipple-stainless)	0,03	Nut D = M 12x1,5 [mm]	Structural steel						
			d		d ₁	l	l ₁	l ₂	h11	
			6,5		12,5	21	17	3	17	
			Nipple [mm]				Structural steel			
			d	d ₁	d ₂	d ₃		l	l ₁	l ₂
			9,5	5,5	6	3		25	6	4
			Washer [mm]				Al			
			d	d ₁	b					
			9,5	5,5	2					
61218 61242	405 961 178 116	0,1	Nut D = M 20x1,5 [mm]	Structural steel						
			d		d ₁	l	l ₁	l ₂	h11	
			12,5		20,5	30	24	5	27	
			Nipple [mm]				Stainless steel			
			d	d ₁	d ₂	d ₃		l	l ₁	l ₂
			17,5	7	12	7		30	5	-
			Washer [mm]				Al			
			d	d ₁	b					
			17	6,5	2					

Ordering example:
 1 pc accessories M12 x 1,5 Order No. 405 961 177 916

Reducing nipple M12 x 1,5/M20x1,5

Order No. 405 961 189 216

Reducing nipple M12 x 1,5/G1/2

Order No. 405 961 189 316

Throttling screw for regulators type 61214 and 61216

(for ranges 4-63 kPa, 10-100 kPa, 16-160 kPa, -80-250 kPa)

Order No. 405 061 050 116

Throttling screw for regulators type 61214 and 61216

(for ranges 25-250 kPa, 40-400 kPa, 63-630 kPa, 0,1-1 MPa, 0,16-1,6 MPa)

Order No. 405 061 167 116

